

NOTE:
MOUNTING SCREWS (ITEM 26) TO BE
PLACED INTO BAG (ITEM 28) AND
ATTACHED TO LANYARD.

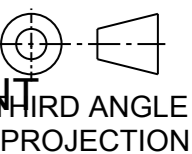
ISSUE NO.	1	2	3					
DATE	09/06/06	05/07/06	11/08/09					
C. NOTE NO.	ERA1820	ERA1849	ERA2562					
CHECKED	BH	BH	MS					
APPROVED	GGW	GGW	GGW					
DRAWN	MATERIAL		FINISH		UNLESS OTHERWISE STATED: TOLERANCES \pm 0.1 SURFACE FINISH 1.6 μ m DIMENSIONS IN mm			
SCALE:	SEE BOM		CLEAN REMOVE ALL BURRS & SHARP EDGES.					
	GGW							
	N.T.S.							

EMERSON
Connectivity Solutions Limited
Russell Way, Widford Industrial Estate,
Chelmsford, Essex, CM1 3AA, UK.
Tel: +44(0)1245 359515 Fax: +44(0)1245 358938

© 2009

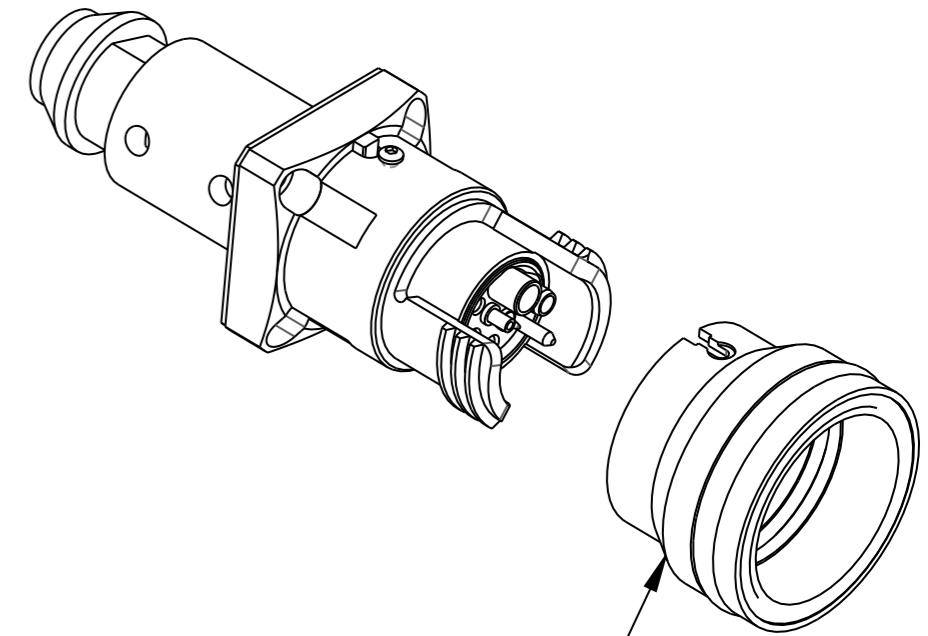
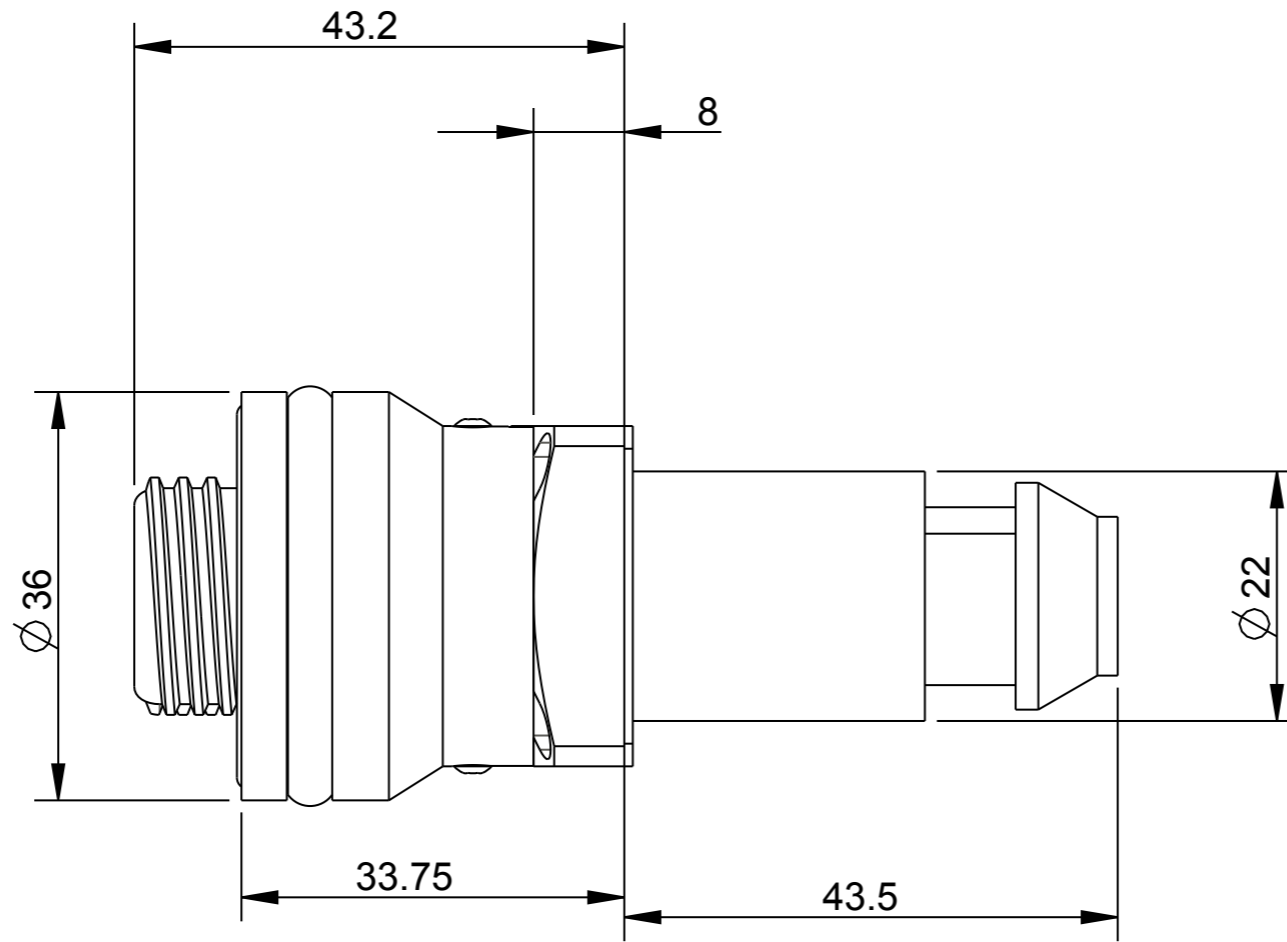
SHEET 1 OF 3

CONFIDENTIAL DOCUMENT
This document and its contents are issued in strict confidence. Neither the whole or any part may be disclosed or copied without written permission.

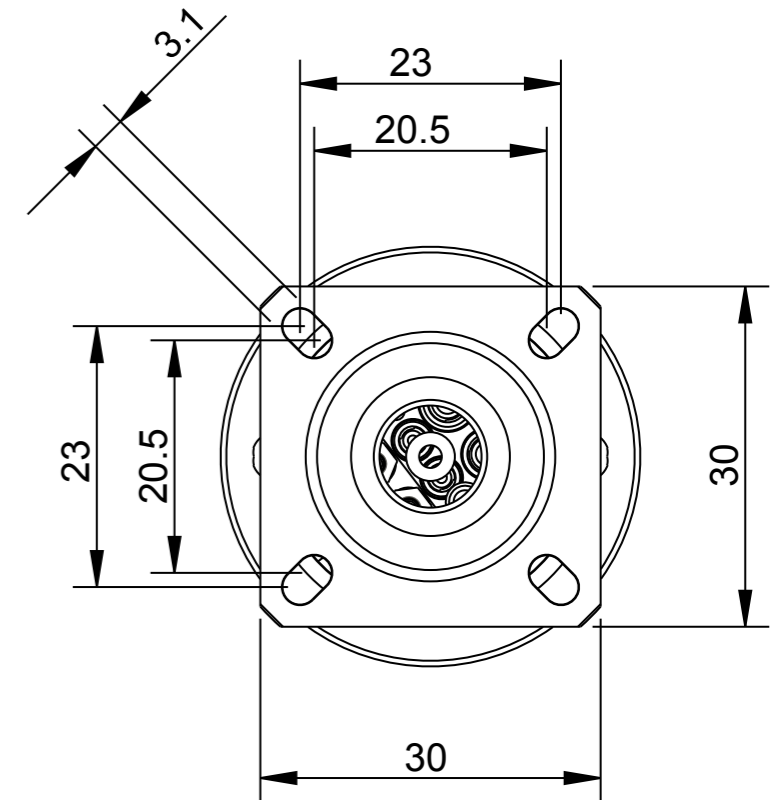
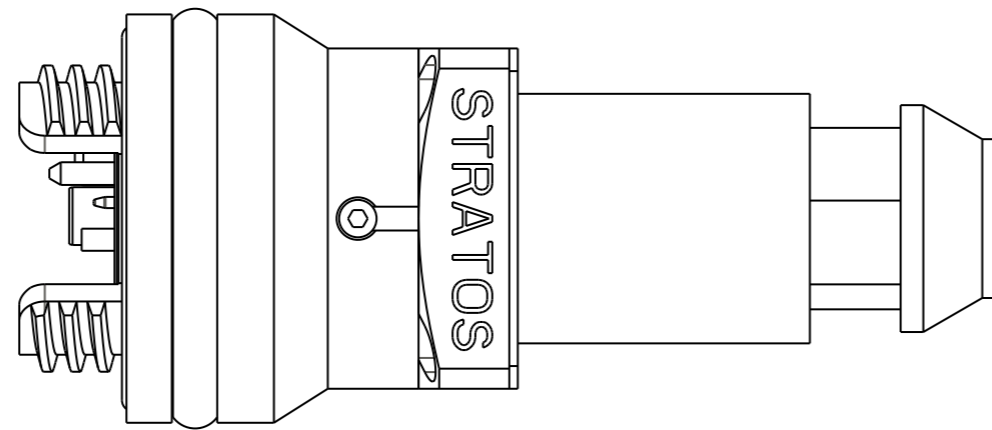
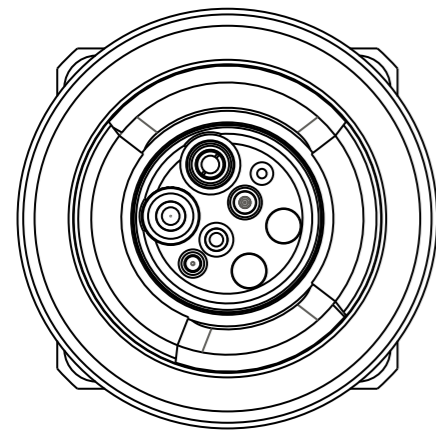


TITLE
**HX1080 2+2+2 HYBRID S/M
CABLE B/H ASSY (NO BOOT)**

DRAWING NUMBER
CON06934



FRONT CONE CAN BE REMOVED FOR ACCESS TO FLANGE SCREWS



ISSUE NO.	1	2	3					
DATE	09/06/06	05/07/06	11/08/09					
C. NOTE NO.	ERA1820	ERA1849	ERA2562					
CHECKED	BH	BH	MS					
APPROVED	GGW	GGW	GGW					
DRAWN	GGW		MATERIAL		FINISH		UNLESS OTHERWISE STATED:	
SCALE:	N.T.S.		SEE BOM		CLEAN		TOLERANCES \pm 0.1	
					REMOVE ALL BURRS & SHARP EDGES.		SURFACE FINISH 1.6 μ m	
							DIMENSIONS IN mm	

EMERSON © 2009
 Connectivity Solutions Limited
 Russell Way, Widford Industrial Estate,
 Chelmsford, Essex, CM1 3AA, UK.
 Tel: +44(0)1245 359515 Fax: +44(0)1245 358938

TITLE
**HX1080 2+2+2 HYBRID S/M
 CABLE B/H ASSY (NO BOOT)**

SHEET 2 OF 3

CONFIDENTIAL DOCUMENT

DRAWING NUMBER
CON06934

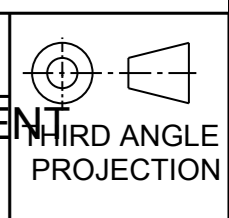
THIRD ANGLE PROJECTION

ITEM No	PART No	DESCRIPTION	No OFF
1	IAS06345	Hx1080 2+2+2 HYBRID S/M INSERT ASSEMBLY	1
2	HOU06367	Hx1080 2+2+2 BH OUTER BODY	1
3	MPP06364-04	IDENTIFICATION RING - RED	1
4	HOU06368	Hx1080 2+2+2 BH FLANGE 20-5 23-0	1
5	HOU06672	Hx1080 BH LOCK RING	1
6	SPR03953	S900 INSERT SPRING 05371	1
7	PIN02049	HMA HEADED D1.8 x 3.25 LG ST STEEL PIN	1
8	ORI01959	16.1 ID x 1.6 SEC NITRILE 70 SHORE BLACK	1
9	ADH06389-NS	LOCTITE 648	AS REQD
10	HOU06371	Hx1080 2+2+2 BH FRONT CONE	1
11	ORI06370	26.7 ID x 1.78 SEC NITRILE 70 SHORE BLACK	1
12	ORI01985	30 ID x 2.0 SEC NITRILE 70 SHORE BLACK	1
13	SCR06373	M2 x 3 BUTTON HEAD SOCKET SCREW ST STEEL	2
14	ADH05472-NS	LOCTITE 222	AS REQD
15	SEA06374	Hx1080 BULKHEAD GASKET SEAL	1
16	ORI06673	9.0 ID x 2.5 SEC NITRILE 70 SHORE 'O' RING BLACK	1
17	CAP06881	Hx1080 ONE PART CAP ASSEMBLY	1
18	FAS06343	Hx1080 FERRULE ASSEMBLY S/M	2
19	ACC06351	SIGNAL CONTACT MALE	1
20	ACC06352	POWER CONTACT MALE	1
21	ACC06694	SIGNAL CONTACT FEMALE	1
22	ACC06354	POWER CONTACT FEMALE	2
23	WAS06355	Hx1080 CLAMP WASHER	1
24	SCR06356	M2 x 8 SMALL HEAD MACHINE SCREW ST STEEL	1
25	ADH06122-NS	Q SIL 550 ADHESIVE	AS REQD
26	SCR03108	M3 x 8 SOCKET CAP SCREW ST STEEL	4
27	CRI06383	Hx1080 2+2+2 PLUG STRENGTH MEMBER CRIMP	1
28	PAC01997	2.25 x 3 SELF SEAL POLYTHENE BAGS	1

ISSUE NO.	1	2	3				
DATE	09/06/06	05/07/06	11/08/09				
C. NOTE NO.	ERA1820	ERA1849	ERA2562				
CHECKED	BH	BH	MS				
APPROVED	GGW	GGW	GGW				

EMERSON © 2009
Connectivity Solutions Limited
Russell Way, Widford Industrial Estate,
Chelmsford, Essex, CM1 3AA, UK.
Tel:+44(0)1245 359515 Fax:+44(0)1245 358938

SHEET 3 OF 3
CONFIDENTIAL DOCUMENT
This document and its contents are issued in strict confidence. Neither the whole or any part may be disclosed or copied without written permission.



DRAWN GGW	MATERIAL SEE BOM	FINISH CLEAN	UNLESS OTHERWISE STATED: TOLERANCES \pm 0.1 SURFACE FINISH 1.6 μ m DIMENSIONS IN mm
SCALE: N.T.S.		REMOVE ALL BURRS & SHARP EDGES.	

TITLE
**HX1080 2+2+2 HYBRID S/M
CABLE B/H ASSY (NO BOOT)**

DRAWING NUMBER
CON06934